



Community Design Workshop

---

**ATRISCO  
ACEQUIA MADRE  
PLAN**

---

January 26, 2022





# AGENDA

- Project & Team Introductions
- What We've Learned
- Small Group Activities
- Share Out & Next Steps





---

# PROJECT PARTNERS

---



South Valley Regional  
Association of Acequias





---

**What connections to this place are  
most important to you?**

---

Small Group Introductions





---

# DRAFT PRIORITIES

---

- Improve connections to trails, open space and amenities along the bosque and on both sides of the Rio Grande
- Celebrate the history and culture of the acequias in the South Valley
- Educate the public about this history and the connection between water and community
- Cultivate a sense of stewardship for our shared water systems
- Foster a relationship between culture, open space, and the economic vitality of Central Ave.





# PROJECT TIMELINE

July - December  
2021

LISTEN

Interviews  
Pop-up Events  
Presentations

January - March  
2022

DRAFT  
PLAN

Presentations  
Community Charrette

April - June  
2022

FINALIZE  
PLAN

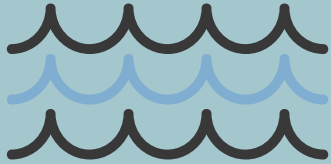
Interviews  
Community Meeting



---

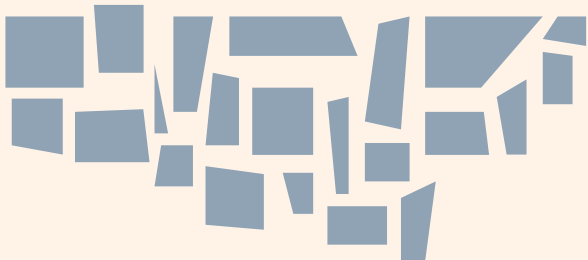
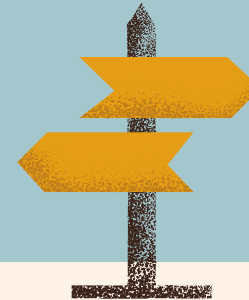
# CONSIDERATIONS AND CONSTRAINTS

---



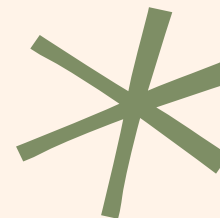
Acequia Infrastructure  
and MRGCD Maintenance

Connections to Nearby  
Destinations and Bosque  
Open Space



Land Ownership and  
Coordination Among  
Multiple Agencies

Central Ave: Commerce,  
Crossings, Site Circulation





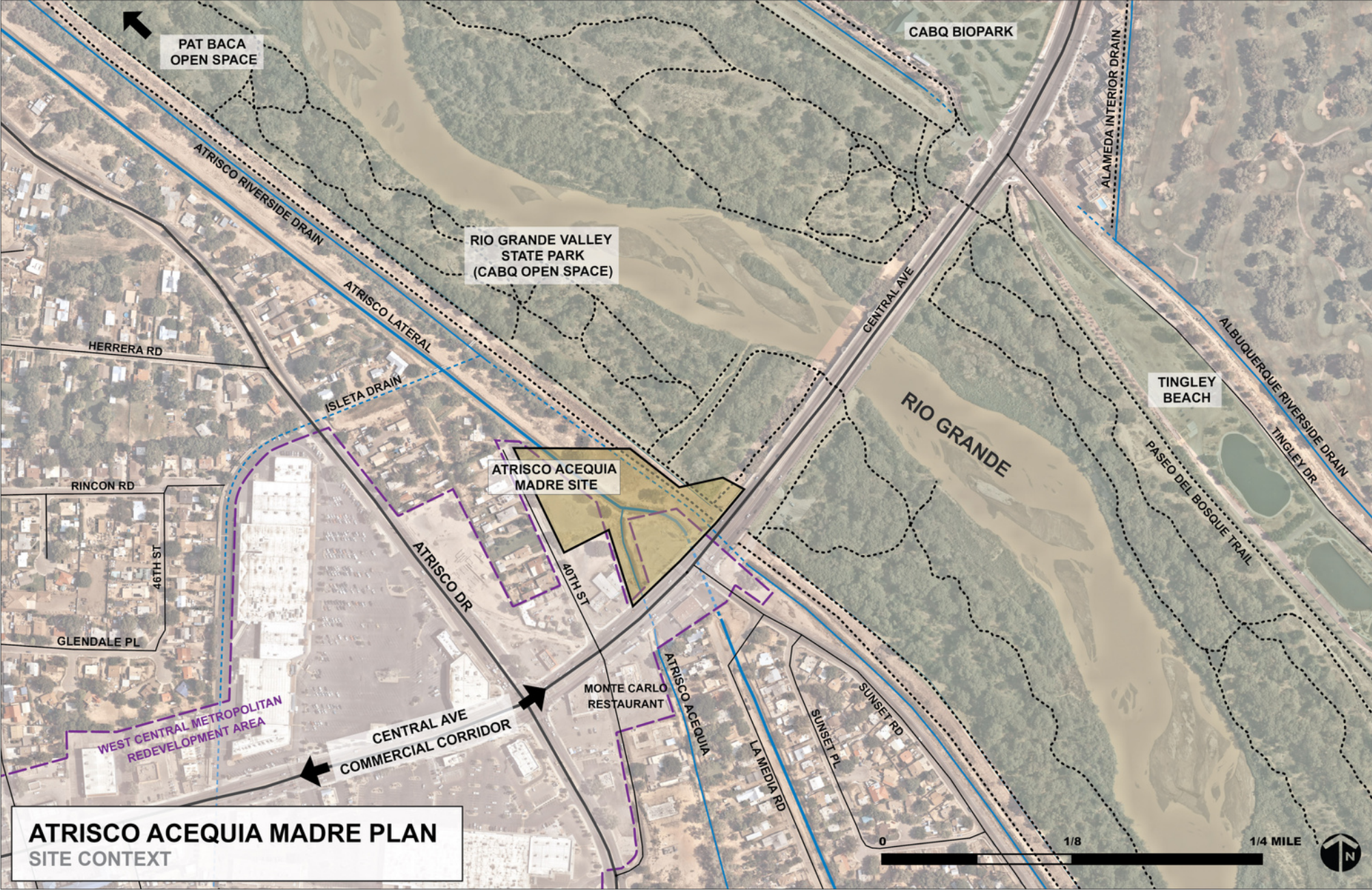
---

# SITE CONTEXT

---







**ATRISCO ACEQUIA MADRE PLAN**  
**SITE CONTEXT**



---

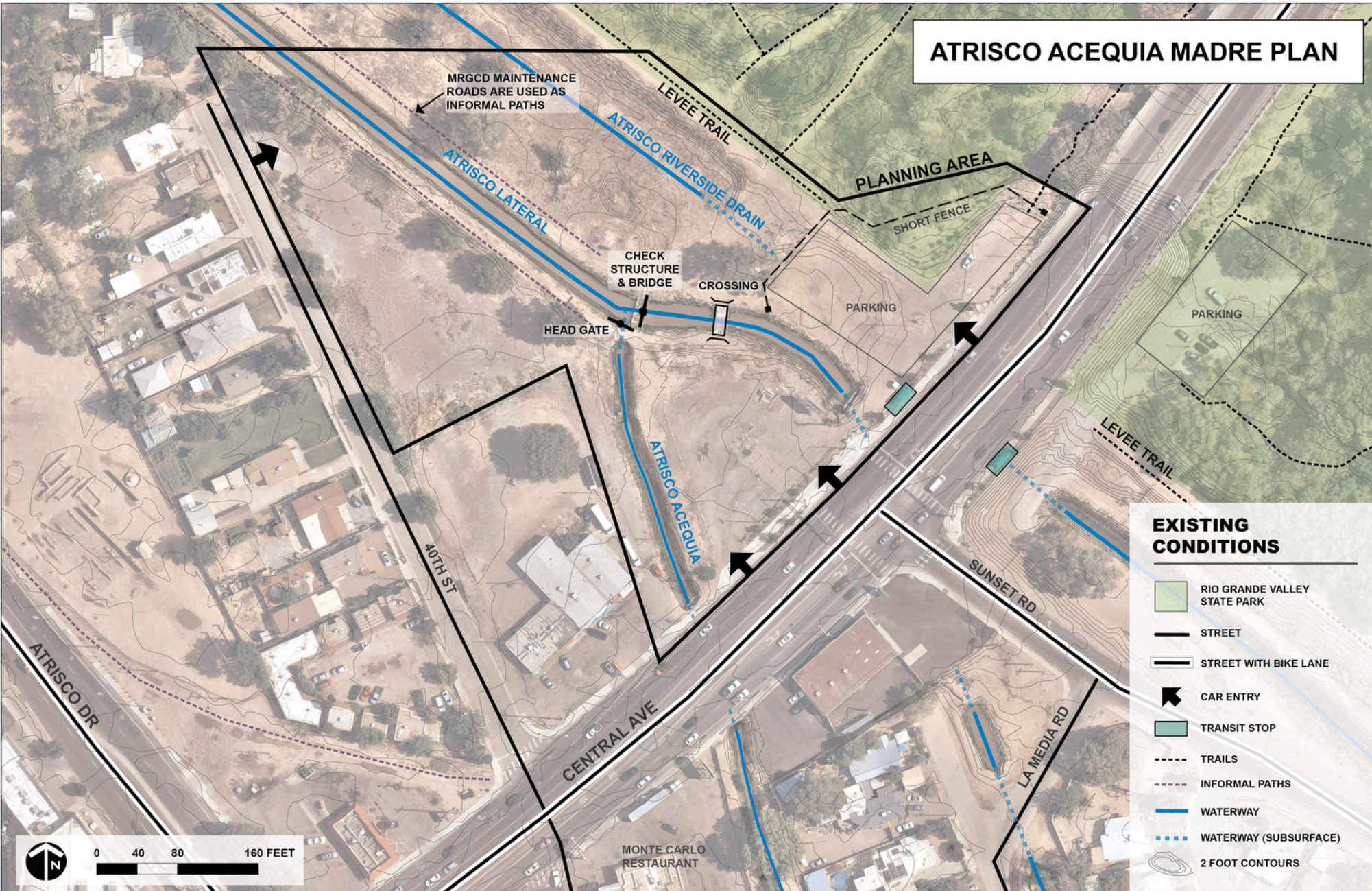
# EXISTING CONDITIONS

---



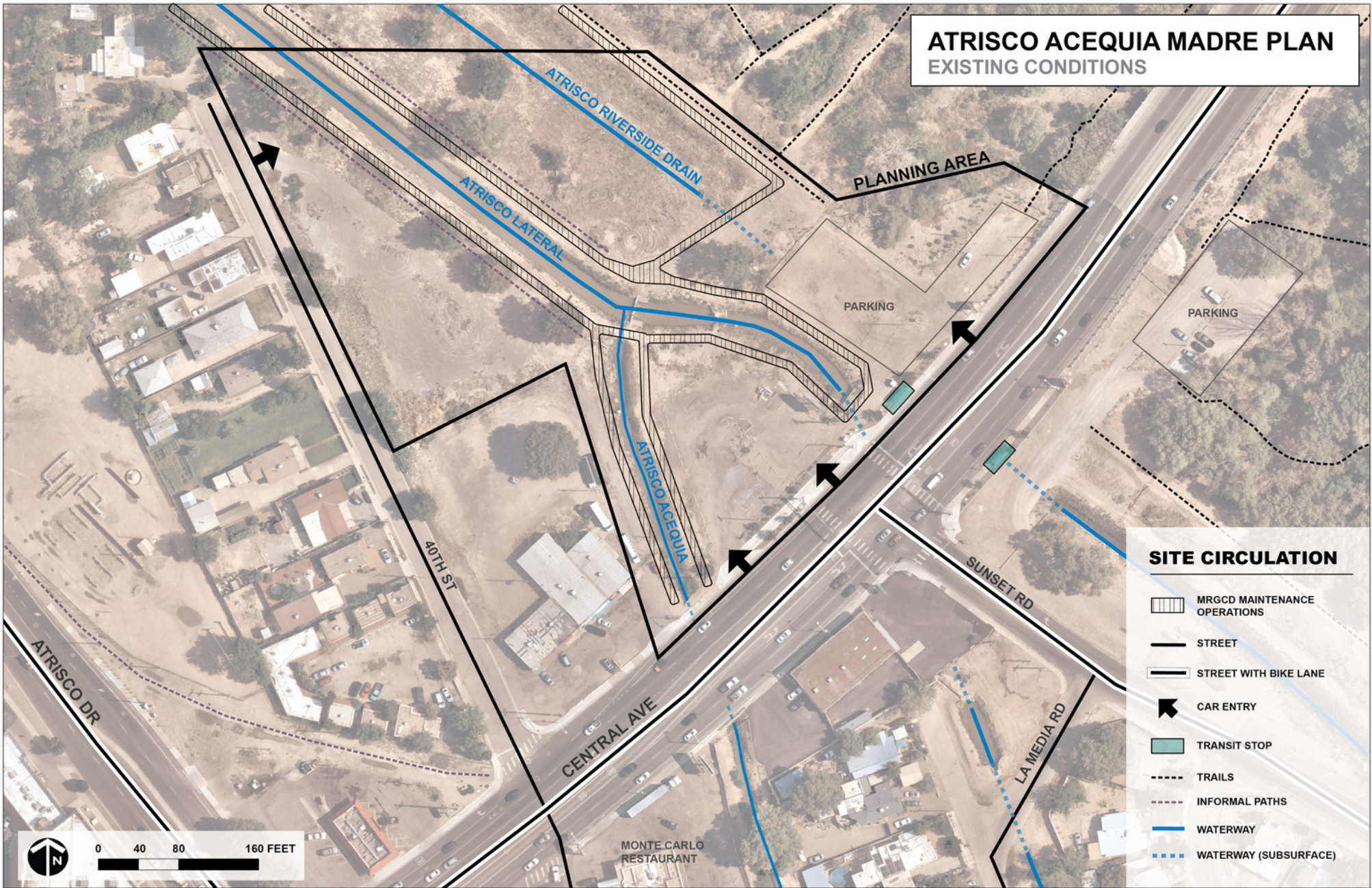


# ATRISCO ACEQUIA MADRE PLAN





# ATRISCO ACEQUIA MADRE PLAN EXISTING CONDITIONS



## SITE CIRCULATION

- MRGCD MAINTENANCE OPERATIONS
- STREET
- STREET WITH BIKE LANE
- CAR ENTRY
- TRANSIT STOP
- TRAILS
- INFORMAL PATHS
- WATERWAY
- WATERWAY (SUBSURFACE)

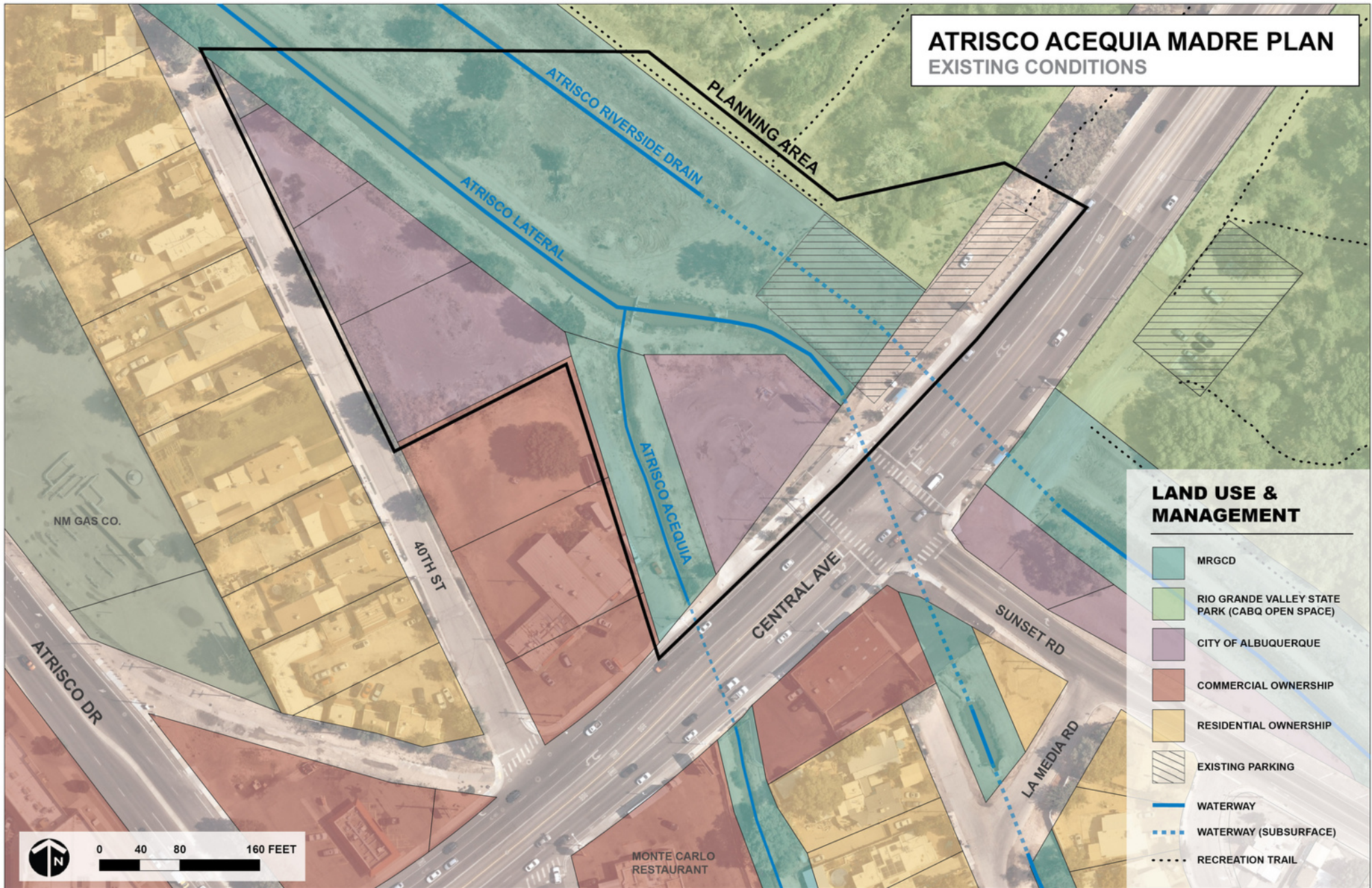






# ATRISCO ACEQUIA MADRE PLAN

## EXISTING CONDITIONS



---

# PRELIMINARY ENGAGEMENT INSIGHTS

---



Project website has over  
500 unique visitors



35 Community Surveys  
completed



3 Neighborhood Association  
Meetings + 5 Stakeholder  
Interviews

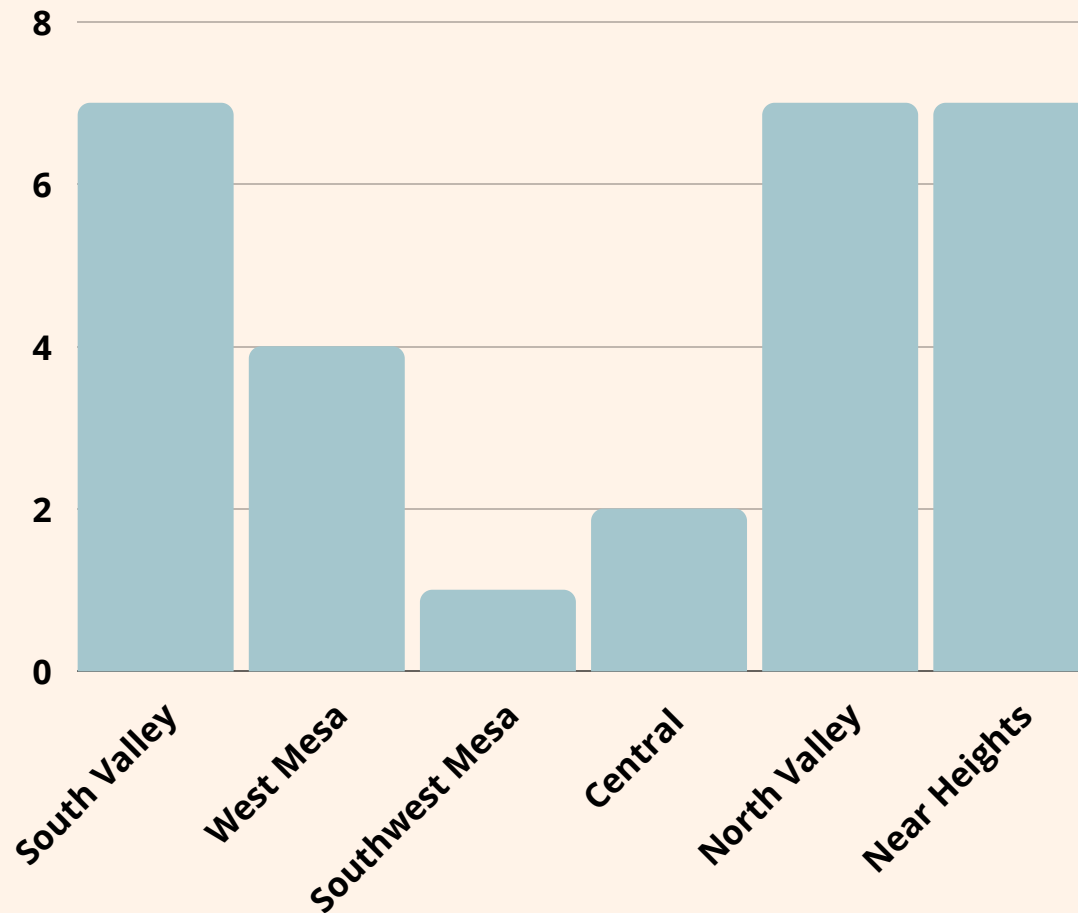


2 Community Events + 3  
Pop-ups at Community  
Markets

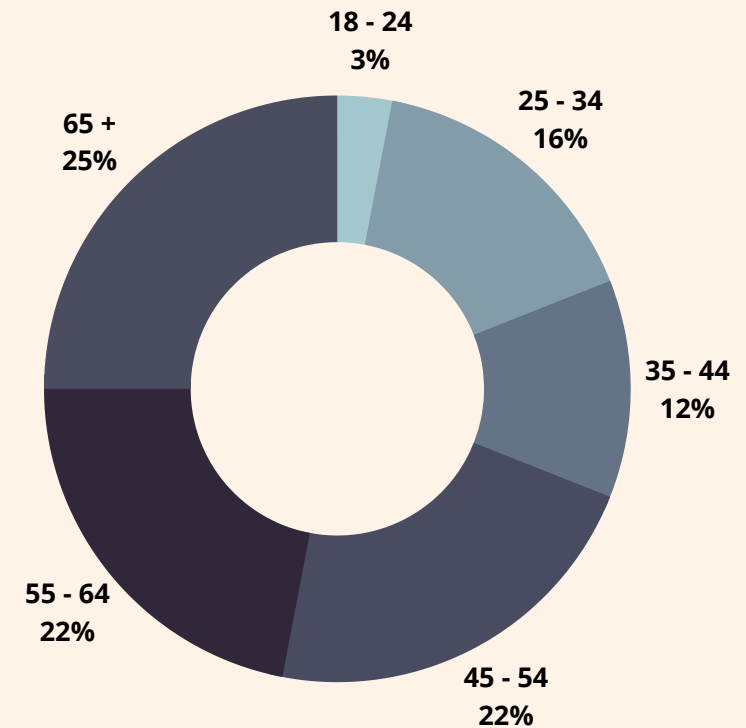


# RESPONDENT PROFILE

## WHERE DO YOU LIVE?



## AGE OF RESPONDENTS

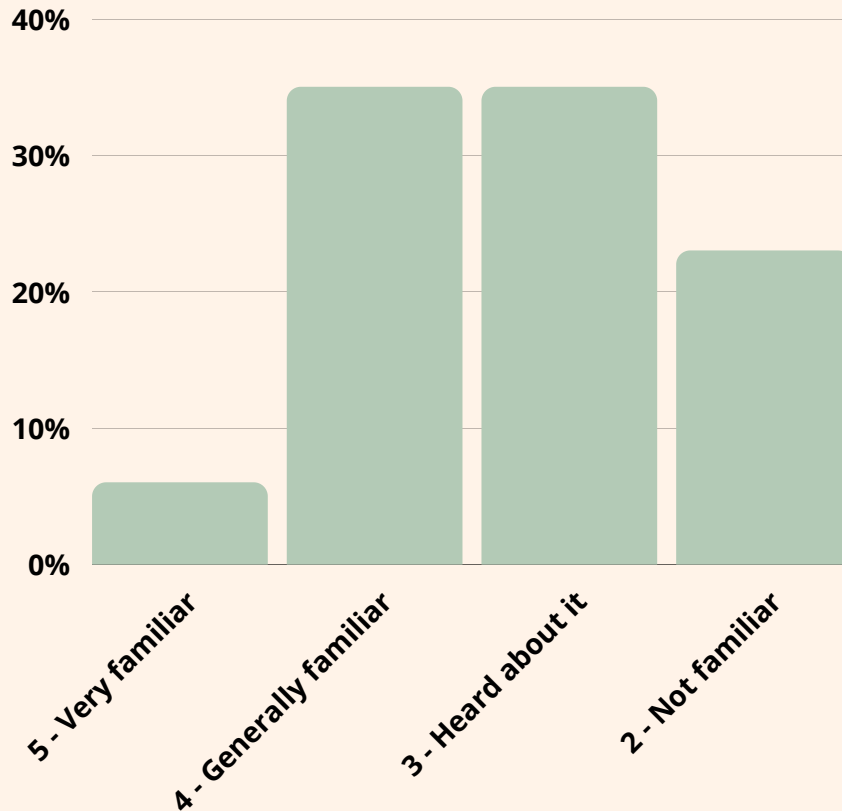




## Preliminary Survey Results

# CURRENT USE

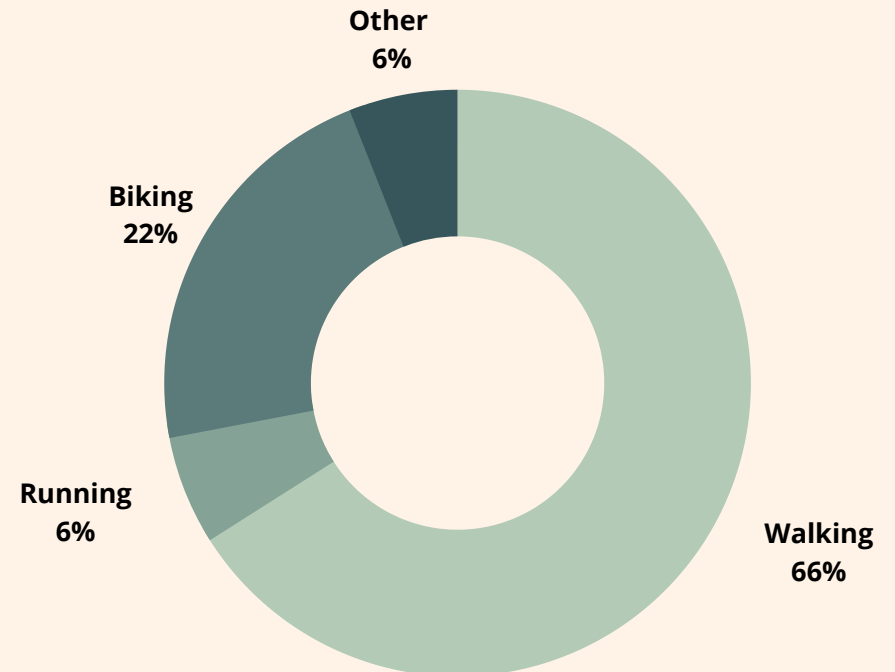
PLEASE SELECT YOUR FAMILIARITY OF THE SITE AND HISTORY:



94%

Respondents have accessed trails near the site

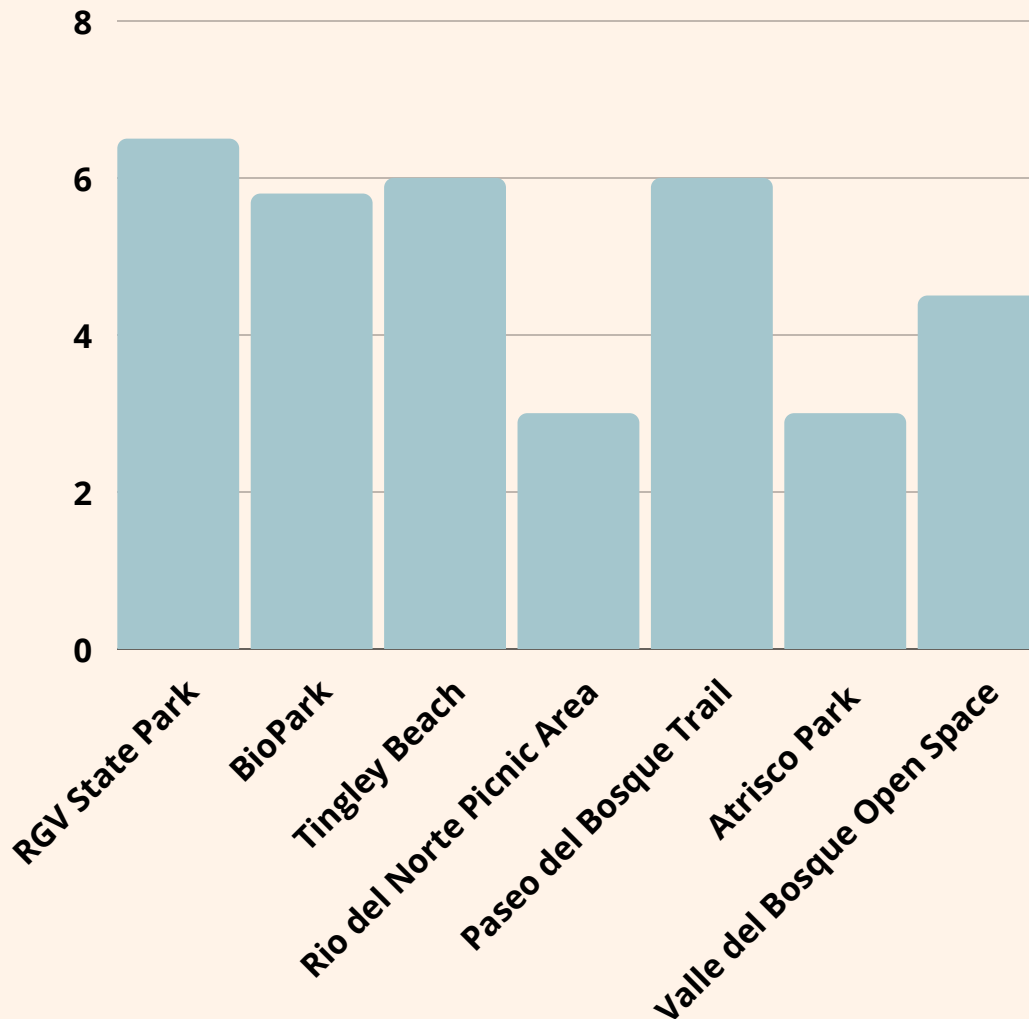
HOW DO YOU USE THE TRAILS?



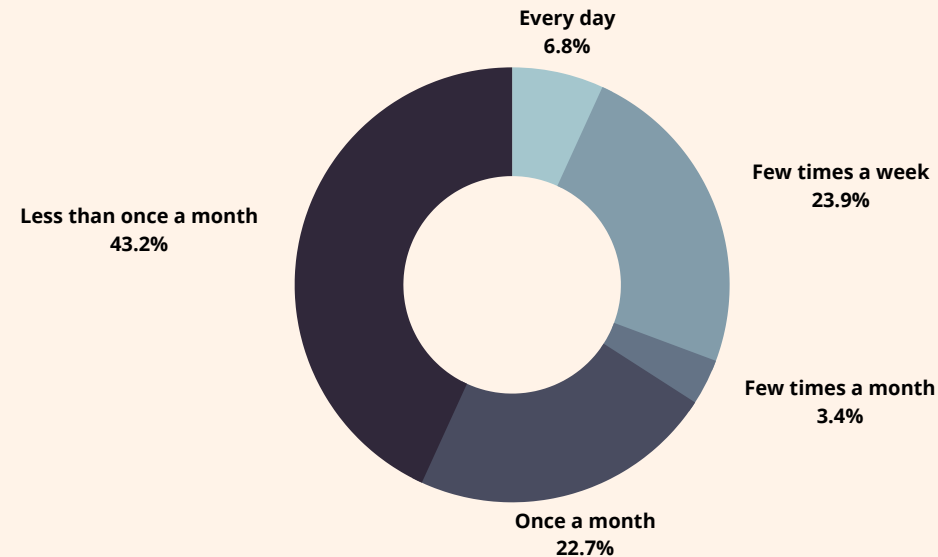


# DESTINATIONS

## HAVE YOU VISITED THESE NEARBY DESTINATIONS?



## HOW FREQUENTLY?



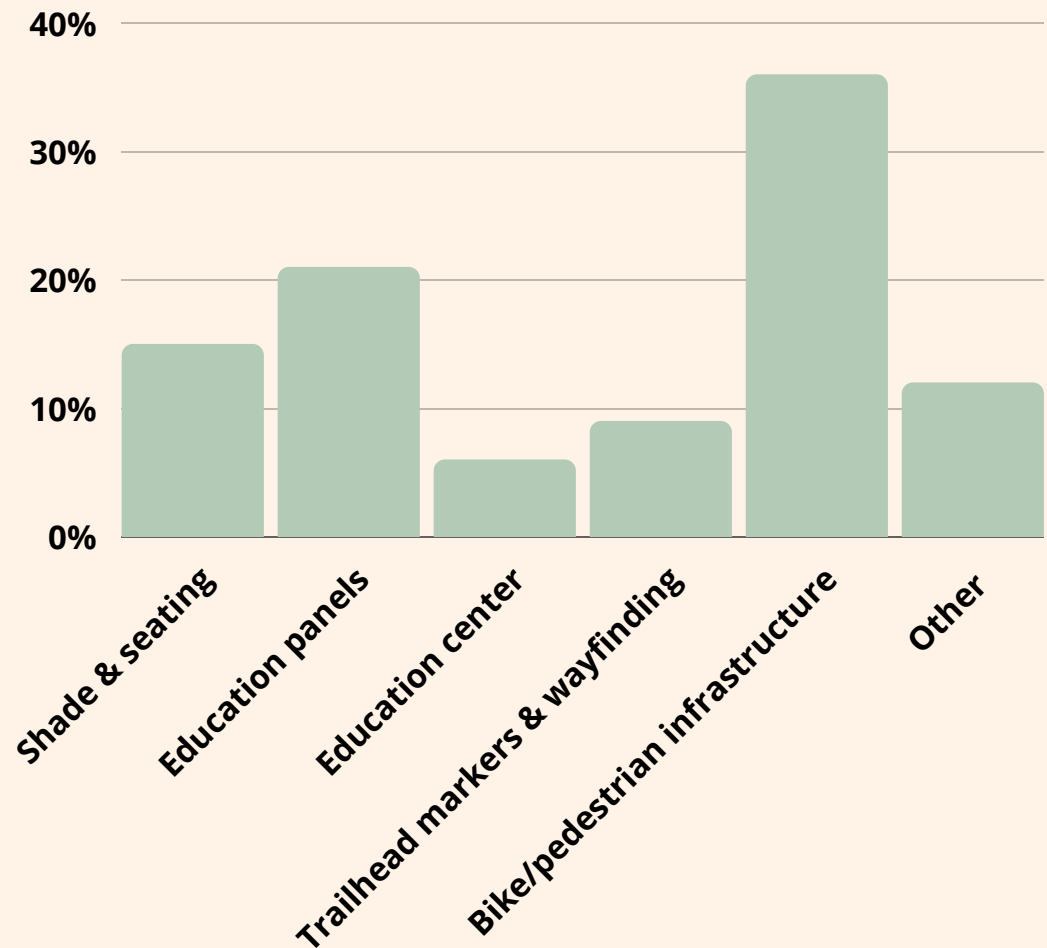


## CHALLENGES & CONSTRAINTS

### BIGGEST ISSUES

- Trail accessibility - surface, connection, wayfinding
- Vehicle vandalism
- Personal safety
- Traffic safety
- Trash, dumping
- More/better parking
- Concerns about encampments

### WHAT WOULD INCREASE YOUR LIKELIHOOD TO VISIT?





## Preliminary Survey Results

---

# PRIORITIES & OPPORTUNITIES

## ELEMENTS TO INCLUDE:



Bike repair station



Native/edible landscape



Community garden



Interpretive signs



Restrooms/water



Shade structure



---

# Small Group Visioning

What story do we want to tell?

---

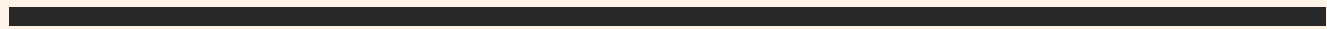
---

# Small Group Visioning

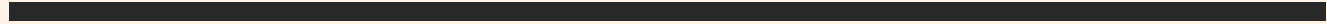
S h a r e

---





# Small Group Design Direction



---

# LESS DEVELOPED

---





---

# MORE DEVELOPED

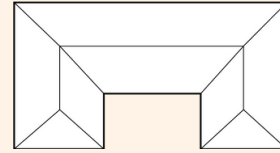
---



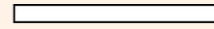
---

# DESIGN ELEMENTS

---



Facility



Trail



Landscaping



Seating Area



Parking



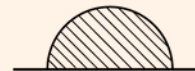
Nature Play



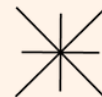
Community Garden



Signage/Wayfinding



Overlook



Public Art



---

# Small Group Design Direction

S h a r e

---





---

THANK YOU

---

[www.AcequiaMadrePlan.org](http://www.AcequiaMadrePlan.org)